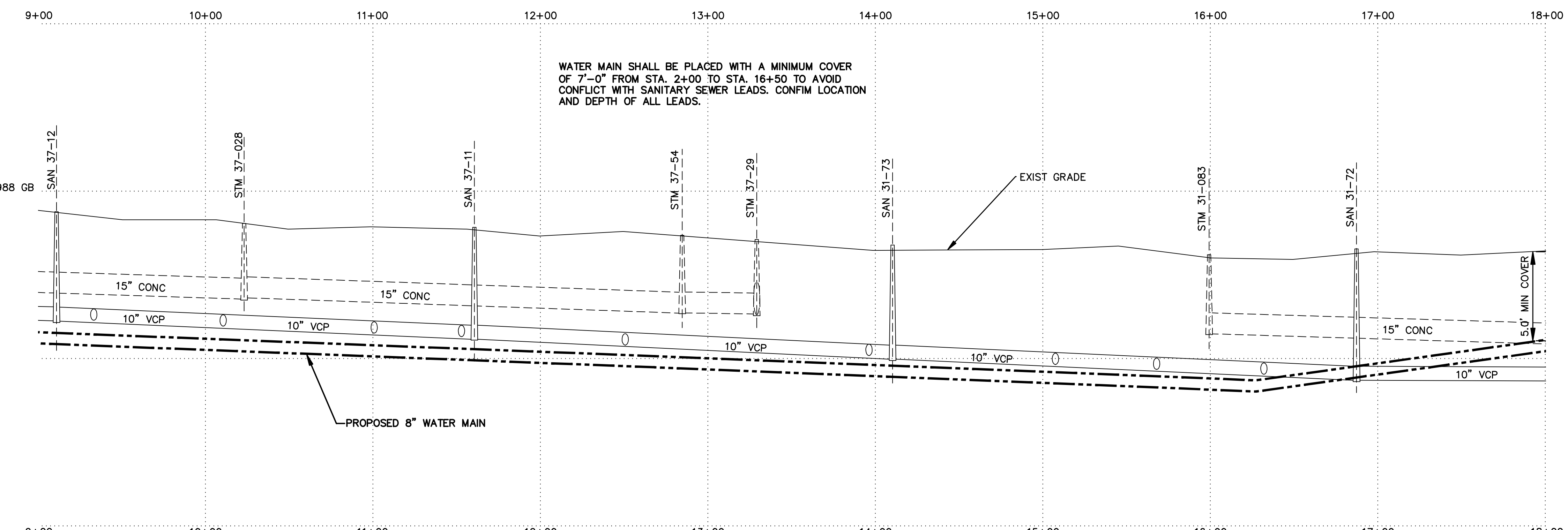
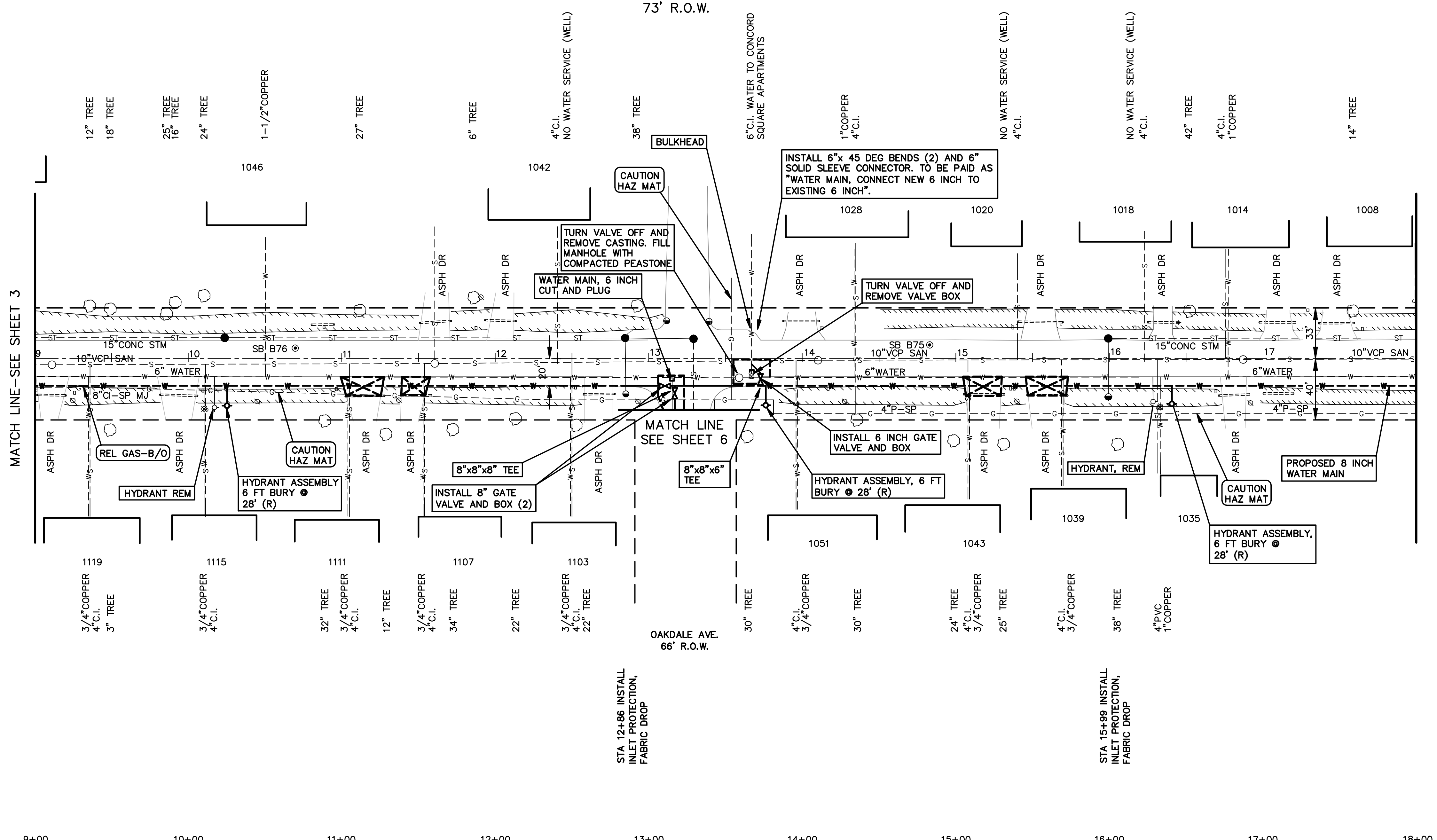


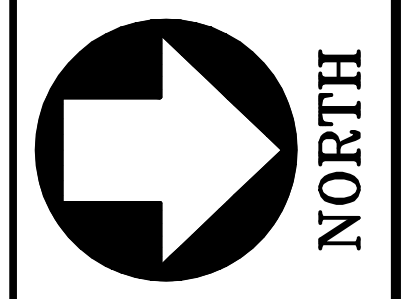
BROWN STREET

73' R.O.W.



QUANTITIES THIS SHEET

- 160 FT PAVT SAWCUT
- 40 SYD DRIVEWAY, REM
- 2 EA EROSION CONTROL, INLET PROTECTION, FABRIC DROP
- 40 SYD AGGREGATE BASE, 8 INCH
- 2 EA GATE BOX, ADJ. CASE 1
- 27 TON HAND PATCHING
- 10 TON HMA 13A
- 70 SYD HMA SURFACE, REM, MODIFIED
- 1 EA GATE VALVE AND BOX, 6 INCH
- 2 EA GATE VALVE AND BOX, 8 INCH
- 2 EA HYDRANT, REM
- 1 EA WATER MAIN, 6 INCH, CUT & PLUG
- 15 FT WATER MAIN BACKFILL, CLASS II
- 10 FT WATER MAIN, 6 INCH
- 15 FT WATER MAIN, 8 INCH
- 900 FT WATER MAIN, 8 INCH, DIR BORE
- 3 EA HYDRANT ASSMBLY, 6 FOOT BURY
- 1 EA WATER MAIN, CONNECT NEW 6 INCH TO EXISTING 6 INCH
- 8 EA WATER SERV, RECONNECT, 3/4 INCH
- 3 EA WATER SERV, RECONNECT, 1 INCH
- 1 EA WATER SERV, RECONNECT, 1-1/2 INCH



CITY OF JACKSON
DEPARTMENT OF ENGINEERING

WATER MAIN REPLACEMENT
S. BROWN STREET : HIGH TO MORRELL
PLAN & PROFILE

DATE:	06/16/09
HOR SCALE:	1" = 40'
VERT SCALE:	1" = 4'
DRAWN BY:	MGB
DESIGN BY:	RTM
CHECKED BY:	RTM
APPROVED BY:	RTM
SHEET	4 OF 8

NOTES:
1. SEE SHEET 3 FOR WATER MAIN CONSTRUCTION NOTES.