

**GENERAL PLAN NOTES**

- GRADES FOR INTERSECTIONS**  
INTERSECTIONS ARE TO BE CONSIDERED AS COMPLETE UNITS AND THEIR GRADES DETERMINED BEFORE CONSTRUCTION STARTED. THE NORMAL GUTTER OF THE PROPOSED PAVEMENT, ADJACENT TO THE INTERSECTION, SHALL BE CARRIED ACROSS THE INTERSECTION WITH A MAXIMUM VARIATION OF 2" AT THE EDGE OF THE PAVEMENT, IF NECESSARY DUE TO GRADES ON THE CROSS STREET.
- ADJUSTING MONUMENT BOXES**  
GOVERNMENT CORNERS ON THIS PROJECT SHALL BE PRESERVED. WHERE NECESSARY, MONUMENTS AND BOXES SHALL BE WITNESSED PRIOR TO CONSTRUCTION AND REPLACED PRIOR TO PLACEMENT OF HMA TOP COURSE BY A CITY OR COUNTY SURVEYOR. IT SHALL BE THE CONTRACTOR'S RESPONSIBILITY TO COORDINATE THESE ACTIVITIES WITH THOSE OF CONSTRUCTION. HMA TOP COURSE WILL NOT BE PLACED PRIOR TO REMONUMENTATION OF LOST CORNERS. GOVERNMENT CORNERS/EXISTING MONUMENTS MAY OR MAY NOT BE INDICATED ON THE PLANS.
- SIGNS**  
SIGNS REQUIRING RELOCATION DUE TO CONSTRUCTION OPERATIONS SHALL BE SALVAGED AND RESET BY THE CONTRACTOR AT LOCATIONS DESIGNATED BY THE ENGINEER. REGULATORY SIGNS SHALL BE REPLACED IMMEDIATELY. PAYMENT FOR THIS WORK IS INCLUDED WITH THAT FOR THE MINOR TRAF DEVICES PAY ITEM.
- SOIL EROSION & SEDIMENTATION CONTROL**  
DURING CONSTRUCTION, THE CONTRACTOR SHALL BE RESPONSIBLE FOR SITE STABILIZATION AND SOIL EROSION AND SEDIMENTATION CONTROL IN ACCORDANCE WITH THE REQUIREMENTS OF JACKSON COUNTY AND PART 91 OF THE STATE OF MICHIGAN PUBLIC ACT 451, 1994 AND AS AMENDED. THE S.E.S.C. DEVICES CALL FOR IN THIS PLAN SET ARE THE MINIMAL MEASURES REQUIRED. ADDITIONAL S.E.S.C. MEASURES MAY BE IMPLEMENTED AT THE CONTRACTOR'S EXPENSE.
- ADJUSTING DRAINAGE STRUCTURE COVERS**  
THE DRAINAGE STRUCTURE COVERS SHALL BE ADJUSTED PRIOR TO PLACING TOP COURSE. FINAL ADJUSTMENT OF THE COVERS AFTER THE TOP COURSE OF HMA IS PLACED IS NOT ALLOWED.
- DRIVEWAYS**  
EXCEPT AS INDICATED OTHERWISE ON THE PLANS, ALL DRIVE APPROACHES SHALL BE 6 INCH CONCRETE CONFORMING TO DETAIL "L" PER MDOT STANDARD AS LISTED ON THE TITLE SHEET. DRIVE OPENING WIDTH SHALL BE AS SHOWN ON THE STANDARD DETAILS SHEET.
- UTILITY POLES**  
UTILITY POLES WITHIN THE INFLUENCE OF UNDERGROUND CONSTRUCTION SHALL BE SUPPORTED BY THE CONTRACTOR. THE CONTRACTOR SHALL SUBMIT PLANS FOR SUPPORTING LOCAL AND TRANSMISSION POLES TO THE PROPER UTILITY FOR APPROVAL PRIOR TO PERFORMING THE WORK. COST OF SUPPORTING UTILITY POLES SHALL BE INCLUDED IN OTHER PAY ITEMS.
- MAINTAIN ACCESS TO DRIVEWAYS**  
ACCESS TO ALL DRIVEWAYS SHALL BE MAINTAINED BY THE CONTRACTOR WITH THE USE OF SALVAGED GRAVEL, OFF-SITE GRAVEL OR MILLED TAILINGS. ALL COSTS ASSOCIATED WITH THE MAINTENANCE OF DRIVES SHALL BE INCLUDED WITH THE MACHINE GRADING, MODIFIED PAY ITEM OR OTHER PERTINENT PAY ITEMS.
- MANHOLE AND CATCH BASIN SCHEDULE**

MH COVER, STD	EJW 1045 WITH TYPE A LID
MH COVER, SHORT	EJW 1046 WITH TYPE A LID
CATCH BASIN COVER, ADA	EJW 5100 WITH TYPE M1 GRATE
CATCH BASIN COVER, CURB	EJW 7045 WITH TYPE M1 GRATE
CATCH BASIN COVER, DRIVE	EJW 7065 WITH TYPE M1 GRATE

**PUBLIC UTILITIES**

THE EXISTING UTILITY COMPANIES LISTED BELOW AND SHOWN ON THESE PLANS REPRESENT THE BEST INFORMATION AVAILABLE. THIS INFORMATION DOES NOT RELIEVE THE CONTRACTOR OF THE RESPONSIBILITY TO SATISFY HIMSELF AS TO ITS ACCURACY OR HIS RESPONSIBILITY, IN CASE UTILITIES HAVE BEEN CONSTRUCTED OR REMOVED.

NAME OF OWNER	UTILITY TYPE	PHONE NO.
COMCAST CABLE SERVICES	CABLE TV	938-8217
CONSUMERS ENERGY COMPANY	ELECTRICITY	788-2400
CONSUMERS ENERGY COMPANY	GAS	788-1191
AT&T	TELEPHONE	750-0661
CITY OF JACKSON WATER DEPARTMENT	WATER	788-4090
CITY OF JACKSON TRAFFIC SIGNALS AND SIGNS	SIGNALS & SIGNS	788-4160
CITY OF JACKSON DEPARTMENT OF ENGINEERING	STORM & SANITARY SEWERS	788-4160

THE OWNERS OF EXISTING POLES AND OTHER SERVICE STRUCTURES THAT ARE WITHIN GRADING LIMITS AND THAT WILL INTERFERE WITH CONSTRUCTION OPERATIONS WILL MOVE THEM TO LOCATIONS DESIGNATED BY THE ENGINEER OR WILL REMOVE THEM ENTIRELY FROM THE RIGHT OF WAY. OWNERS OF PUBLIC UTILITIES WILL NOT BE REQUIRED BY THE DEPARTMENT TO MOVE ADDITIONAL POLES AND STRUCTURES THAT ARE NOT WITHIN GRADING OR STRUCTURE LIMITS IN ORDER TO FACILITATE THE OPERATION OF CONSTRUCTION EQUIPMENT UNLESS IT IS DETERMINED BY THE ENGINEER THAT SUCH POLE LINE OR STRUCTURES CONSTITUTE A HAZARD TO THE PUBLIC OR ARE EXTRAORDINARILY DANGEROUS TO THE CONTRACTOR'S OPERATIONS.

FOR PROTECTION OF UNDERGROUND UTILITIES AND IN CONFORMANCE WITH PUBLIC ACT 53, THE CONTRACTOR SHALL DIAL 1-800-482-7171 A MINIMUM OF THREE FULL WORKING DAYS, EXCLUDING SATURDAYS, SUNDAYS, AND HOLIDAYS PRIOR TO BEGINNING EACH EXCAVATION IN AREAS WHERE PUBLIC UTILITIES HAVE NOT BEEN PREVIOUSLY LOCATED. MEMBERS WILL THUS BE ROUTINELY NOTIFIED. THIS DOES NOT RELIEVE THE CONTRACTOR OF THE RESPONSIBILITY OF NOTIFYING UTILITY OWNERS WHO MAY NOT BE A PART OF THE "MISS DIG" ALERT SYSTEM.

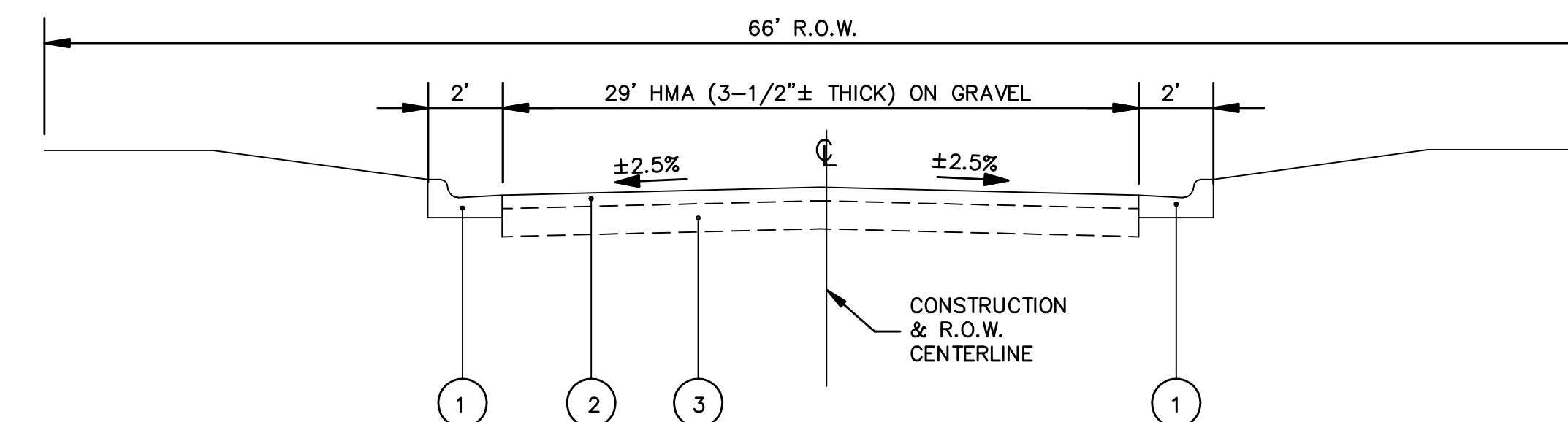
WORK BY OTHERS TO RELOCATE EXISTING UTILITIES MAY BE DONE CONCURRENTLY WITH THE CONTRACTOR'S WORK. THE CONTRACTOR SHALL COORDINATE HIS WORK WITH UTILITY RELOCATION WORK.

**PLAN SHEET LEGEND**

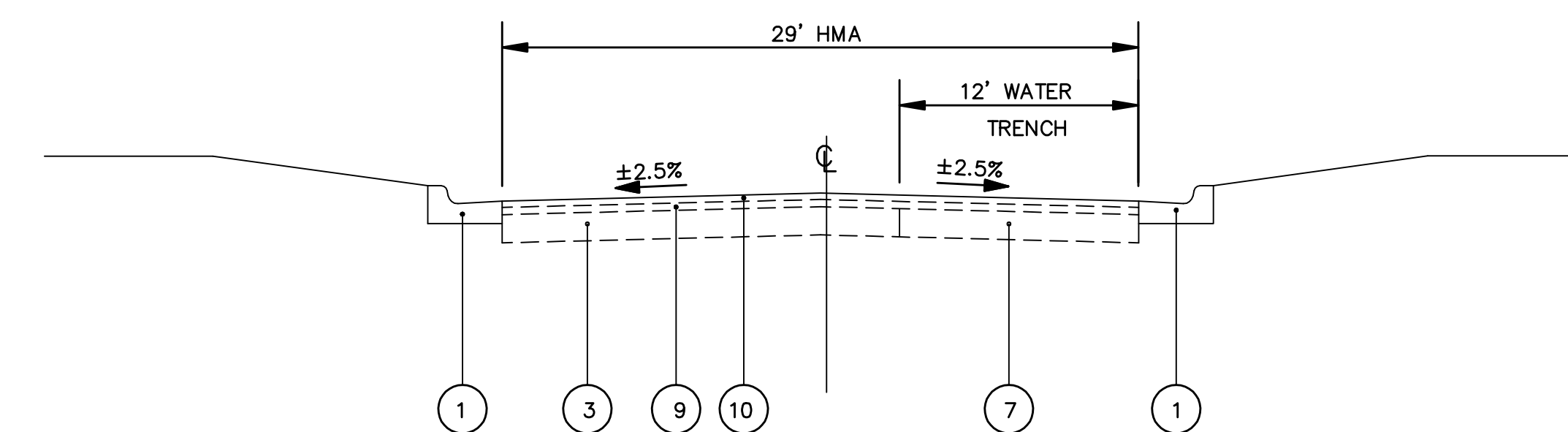
- ⊙ SECTION CORNER
- SANITARY MANHOLE
- STORM MANHOLE
- ⊕ WATER MANHOLE
- ⊙ TELEPHONE MANHOLE
- ⊙ CONSUMERS MANHOLE
- ⊙ CATCH BASIN
- ⊙ WATER VALVE
- ⊙ FIRE HYDRANT
- ⊙ UTILITY POLE
- ⊙ LIGHT POLE
- ⊙ SOIL BORING
- — — — — PROPERTY LINE
- — — — — CENTER LINE
- - - - - W - - - - - WATER MAIN (EXISTING)
- - - - - W - - - - - WATER MAIN (PROPOSED)
- - - - - G - - - - - GAS MAIN
- - - - - S - - - - - SANITARY SEWER (EXISTING)
- - - - - S - - - - - SANITARY SEWER (PROPOSED)
- - - - - ST - - - - - STORM SEWER (EXISTING)
- - - - - ST - - - - - STORM SEWER (PROPOSED)
- - - - - CURB AND GUTTER (PROPOSED)
- RELOCATE BY OTHERS
- SIDEWALK, REMOVE AND REPLACE
- SIDEWALK, REMOVE
- DRIVEWAY, REM

**MISCELLANEOUS ESTIMATES**

1	LS	MOBILIZATION, MAX
1	LS	TREE PRESERVATION
1	LS	PROJECT CLEANUP
30	CYD	TRENCH UNDERCUT & BACKFILL
40	FT	EXPLORATORY TRENCHING
2	EA	SEWER LATERAL REPAIR
500	LB	WATER MAIN FITTINGS, DI
5	EA	POST, MAILBOX
1	LS	MINOR TRAF DEVICES
10	FT	HYDRANT EXTENSION
1	EA	WATER SERV, SHORT, 1 INCH
6	EA	WATER SERV, LONG, 1 INCH



**EXISTING TYPICAL PAVEMENT CROSS SECTION OAKDALE AVE.**



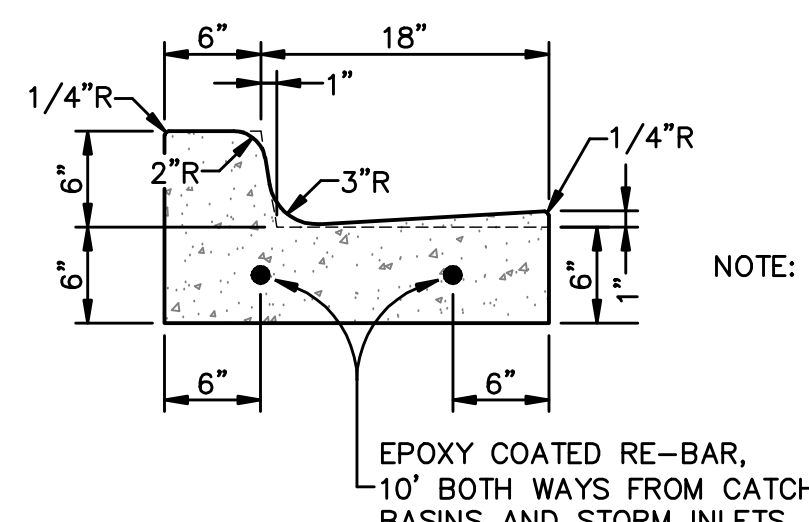
**PROPOSED TYPICAL PAVEMENT CROSS SECTION OAKDALE AVE. - STA 0+85 TO STA 4+20**

**HMA APPLICATION TABLE**

PAY ITEM DESCRIPTION	LOCATION	COURSE	LIFT (INCHES)	APPLICATION RATE (LBS/SYD)	PERFORMANCE GRADE
9 HMA, 13A	STA 0+85 TO 4+20	LEVELING	2	220	PG 58-28
10 HMA, 13A	STA 0+85 TO 4+20	TOP	1-1/2	165	PG 58-28

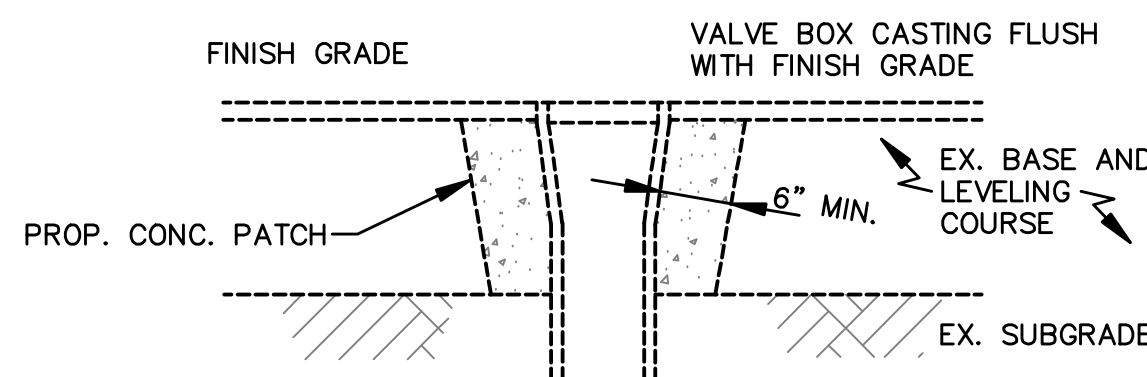
NOTE: TOP COURSE AWI = 220

- 1 EXISTING CURB & GUTTER, TO REMAIN UNDISTURBED
- 2 EXISTING HMA PAVEMENT, TO BE REMOVED
- 3 EXISTING AGGREGATE BASE, TO REMAIN UNDISTURBED EXCEPT AS NOTED
- 7 AGGREGATE BASE, 8 INCH, 22A
- 9 HMA, 13A, LEVELING COURSE, 2 INCHES, 220 LBS/SYD
- 10 HMA, 13A, TOP COURSE, 1-1/2 INCHES, 165 LBS/SYD



**CURB & GUTTER SPECIAL**

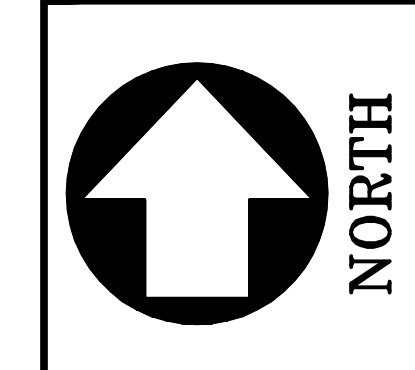
NOT TO SCALE  
0.0495 CYD PER FT



**GATE BOX ADJUSTMENT DETAIL**

NOTE: NO CONSTRUCTION DEBRIS OR MATERIAL TO BE LEFT IN OR AROUND WATER VALVE.

NO.	DESCRIPTION (REVISIONS)	DATE	BY



**CITY OF JACKSON**  
DEPARTMENT OF ENGINEERING

**WATER MAIN REPLACEMENT**  
**S. BROWN ST: HIGH ST TO MORRELL ST**  
NOTE, LEGEND, DETAILS AND TYPICAL CROSS SECTION

DATE:	06/15/2009
HOR SCALE:	N.T.S.
VERT SCALE:	NA
DRAWN BY:	MGB
DESIGN BY:	DJD
CHECKED BY:	RTM
APPROVED BY:	RTM
SHEET	2 OF 8